



NEWSLETTER #4 | DECEMBER 2022

Welcome to the fourth and final Newsletter of the Hands-on SHAFE Erasmus+ project. The project that started in 2019 already ends, and we are happy to inform you about the concrete results we developed together. Also, we invite you to further develop the results and adapt them to your local, regional, or national needs by becoming an Associated Partner.



International Multiplier Event in Coimbra: Smart Healthy Age-Friendly Environments Conference, 8th – 9th December 2022

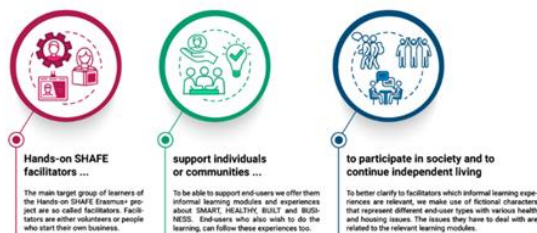
On November 8th and 9th, 150 participants met to talk about Smart Healthy Age-friendly Environments and Social Innovation in Coimbra. This conference was co-organised by the Nursing School of Coimbra, SHINE 2Europe and AFEdemy, and aimed to share and discuss approaches, projects and best practices related to Social Innovation and how to implement and develop healthier and inclusive environments. Hands-on SHAFE was high on the agenda in the plenary session and a well-visited workshop.

[READ MORE](#)

SHAFE Facilitators – Invitation to learn

Volunteers, informal and formal caregivers, and social entrepreneurs who aim to support older adults and others are the target groups of Hands-on SHAFE. That is facilitators willing to implement Smart Healthy Age-Friendly Environments in their streets, neighbourhood, or town.

[READ MORE](#)



Recognizable challenges

People are the core of Smart Healthy Age-Friendly Environments. Inclusive, smart, and social participation are the main aims for all. To support facilitators to take care of others and the neighbourhood, Hands-on SHAFE provides 6 examples of recognizable characters as guidance for learning.

[READ MORE](#)





Accessible learning for free

Individually or in a group: Hands-on SHAFE provides learning modules on SMART, HEALTHY, BUILT environments and BUSINESS development. Interactive online modules guide the user through the learning content and also provide assessments. The learning material is also available in pdf for downloading and using with people who are not online.

[READ MORE](#)



You were successful!

Learners who completed one or more series of the SMART, HEALTHY, BUILT and BUSINESS modules will receive a certificate.

Top certificates are available for facilitators who fully completed the learning material. They manage to correctly answer the questions in the final assessment.

[READ MORE](#)

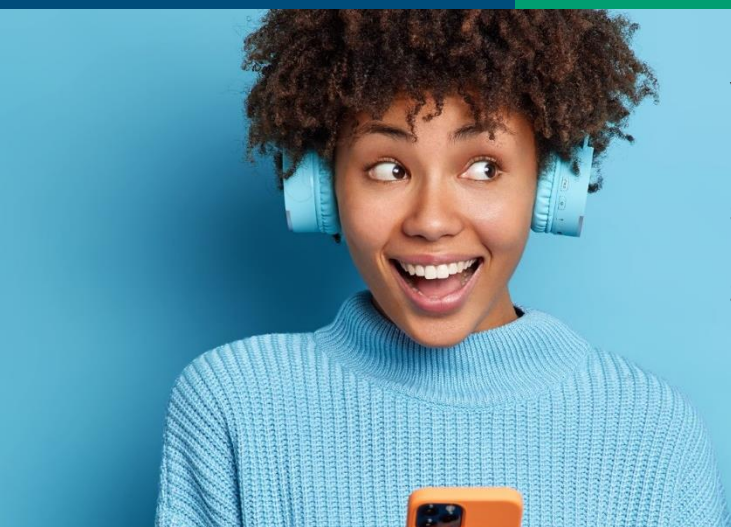


Support the facilitator

To enable public authorities, care organisations and others to support SHAFE facilitators, we provide a guiding Manual and a Tutorial. You can find the Manual and Tutorial here. In the manual, you can also find information on how to become an Associated Partner to further develop the results and adapt them to your local, regional, or national needs.

[READ MANUAL](#)


[READ TUTORIAL](#)



You receive this newsletter because you are directly involved in or considered to be interested in the Hands-on SHAFE project. If you have any questions, suggestions for cooperation or any further comments, please let us know (Javier Ganzarain and Willeke van Staalduin, info@afedemy.eu).

 hands-on-shafe.eu



 Co-funded by the
Erasmus+ Programme
of the European Union

The European Commission's support for the production of this publication does not constitute an endorsement of the contents, which reflect the views only of the authors, and the Commission cannot be held responsible for any use which may be made of the information contained therein.